



Smart Building



POE

About nCompass

nCompass is an innovative product offering of structured cabling solutions created by Legrand and Superior Essex. nCompass provides you with support, reliability, flexibility, and efficient solutions that meet or exceed industry standards and are backed by Limited Lifetime Warranty.

Demonstrating a commitment to sustainability, nCompass Systems offer the first and only Environmental Product Declarations and Health Product Declarations for a structured cabling solution.



High Power, Low Data 1G 4PPoE PREMIUM COPPER CABLING SYSTEM WITH POWERWISE® AND CLARITY®

This nCompass™ Copper Cabling System combines Superior Essex® PowerWise 1 Gigabit 4PPoE cabling and Clarity 5e connectivity by Legrand® to offer premium channel performance, power delivery, and energy efficiency that exceed industry standards. This industry leading system is an ideal solution for high-data, low power applications, like pan/tilt/zoom (PTZ) cameras, thin clients, and PoE lighting. It assures overall channel performance significantly above current industry specifications, and it improves network efficiency with exceptional PSNEXT, and PSACR over current Cat 5e standards. Supports 100W power delivery with 88% efficiency.

System Benefits

- Supports IEEE 802.3bt
- Offers 8 dB crosstalk margin over ANSI/TIA-568-C.2 to assure better performance
- Best in class DCR, offering headroom above IEEE requirements
- Jack contact designs locate arcing away from the critical contact area in a fully mated connection
- CableID® allows cable run to be identified easily on both ends
- ColorTip™ allows for cables to be easily identified
- Backed by a Limited Lifetime Warranty

Channel Margin Guarantees (under 100w load)

Parameter	Margin vs. TIA-568-C.2
Insertion Loss	15%
NEXT	8 dB
PSNEXT	9 dB
Return Loss	3 dB
ACRF	10 dB
PSACRF	11 dB
ACR	10 dB
PSACR	11 dB
DCR Loop	0.16% (13mOhm)
DCR P2P	0.60% (70mOhm)

NOTE: Margins supported over standard compliant channels from 7 to 100 meters

Power Guarantees

Wattage Rating	100w
Power Efficiency	88%



High Power, Low Data 1G 4PPoE

PREMIUM COPPER CABLING SYSTEM WITH POWERWISE® AND CLARITY®

LEGRAND

Clarity® 5e U/UTP Modular Jacks

Description	Part Number
High Density Jack 5e, U/UTP T568A/B	HDJ5E*
TracJack® 5e, 180° Exit T68A/B	TJ5E00**

**Standard color is Fog White. Choose from additional colors below by adding suffix designation.



*Standard color is Fog White. Choose from additional colors below by adding suffix designation.



Note: All Clarity workstation mounting solutions for High Density Jack and TrackJack are eligible for nCompass warranty coverage.

Patch Panels

Description	24-Port	48-Port
Clarity 5e Loaded-Angled Panel	PHA5E6U24	PHA5E6U48 (2RU)
Clarity 5e Loaded-Flat Panel	PHD5E6U24	PHD5E6U48 (2RU)
Unloaded-Angled Panel for HDJ Jacks	PHAHJU24	PHAHJU48 (1RU)
Unloaded-Flat Panel	PHDHJU24	PHDHJU48 (1RU)

Clarity 5e U/UTP Patch Cords

Description	Part Number
5e U/UTP Patch Cord	MC5Exxyy

xx = Length: (03), (05), (07), (09), (15), (20) or (25) feet.

yy = Jacket Color: choose from the colors below.



PowerWise Pre-Terminated Assemblies

Description	Part Number
Solid Conductor Cable Assemblies	PW5ExxyDB-zz

x = P for Plenum, R for Riser

yy = Length: (05), (10), (15), (20), (25), (30), (35), (40), (45), (50), (60), (70), (80), (90), (100), feet.

zz = Jacket Color: choose from the colors below.



SUPERIOR ESSEX

PowerWise

Listing	Part No.	Nom. Diameter in (mm)	Approx. Weight lbs/kft (kg/km)	Package
CMR	PW52-H46-x5	0.19 (4.8)	19 (28)	1,000' Reel-in-a-Box
CMR	PW52-H72-x5	0.19 (4.8)	19 (28)	1,000' POP box
CMP	PW52-H46-x8	0.19 (4.8)	21 (31)	1,000' Reel-in-a-Box
CMP	PW52-H72-x8	0.19 (4.8)	21 (31)	1,000' POP box

x = Jacket Color: choose from the colors below.



* Superior Essex copper cables provide EPDs, HPDs and Multi-Attribute Labels.



TJ5E00-88



HDJ5E-27



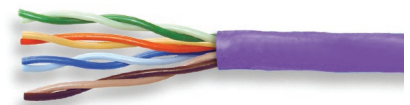
MC5E07-07



PHA5E6U24



PHAHJU48



PW52-H46-28

