



CAT 6 U/UTP (RDC)

STANDARD COPPER CABLING SYSTEM WITH REDUCED DIAMETER PATCH CORDS

About nCompass

nCompass is an innovative product offering of structured cabling solutions created by Legrand and Superior Essex. nCompass provides you with support, reliability, flexibility, and efficient solutions that meet or exceed industry standards and are backed by Limited Lifetime Warranty.

Demonstrating a commitment to sustainability, nCompass Systems offer the first and only Environmental Product Declarations and Health Product Declarations for a structured cabling solution.



nCompass™ now offers a warranted copper solution that includes Legrand's reduced diameter category (RDC) patch cords (cord OD of .155"), Superior Essex Series 77 CAT 6 U/UTP cabling with Cat6 keystone Jacks and TechChoice panels by Legrand®. RDC cords utilize 28awg cable, and as a result the maximum channel length is limited to meet TIA channel performance requirements.

RDC cords become a candidate when retrofitting existing rack or cabinet installations that are at capacity, have saturated vertical or horizontal management, or when new or additional cords need to be introduced into high density scenarios. The smaller cord size can also allow more viewable space on the panels to assist with port identification and provide more space for future Moves Adds Changes (MAC).

This nCompass solution offers reliable channel performance that exceeds the ANSI/TIA-568-C.2 standard. With 3dB margin in ACR and PSACR, this system is designed for changing technologies requiring a network that will grow with future demands. Connectivity and cabling products that are a part of nCompass "+" systems may be substituted for the listed components. Visit nCompass-systems.com for the full range of products.



CAT 6 U/UTP (RDC)

STANDARD COPPER CABLING SYSTEM WITH REDUCED DIAMETER PATCH CORDS

System Benefits

- 3 dB crosstalk margin above ANSI/TIA-568-C.2 requirements
- CableID® allows cable run to be identified easily on both ends
- Supported by Small Diameter patch cord offering
- ColorTip™ allows for cables to be easily identified
- TechChoice and KT2J keystone connectivity and cords are designed for reliable mid-range channel performance
- KT2J jacks have labor saving lacing cap termination and are supplied with an installation tool in every carton of 20 jacks
- Backed by a Limited Lifetime Warranty

Channel Margin Guarantees

Parameter	Margin vs. TIA-568-C.2
Insertion Loss	3%
NEXT	3 dB
PSNEXT	3 dB
Return Loss	2 dB
ACRF	3 dB
PSACRF	4 dB
ACR	3 dB
PSACR	4 dB

NOTE: Margins supported over standard compliant channels from 7 to the supported channel lengths listed below.

Supported channel lengths/configurations that include these cords are:

96 meter total channel length with a 90 meter permanent link and up to 6 meters of RDC cords

or

93 meter total channel length with up to 10 meters of RDC patch cords included in the channel (10 meters patch with 83 meters of horizontal cable)

The above channel length guidelines will ensure passing insertion loss, which is the only concern using these cords in the longest of channels. These guidelines also support POE (IEEE 802.3af) and POE+ (IEEE 802.3at). TSB 184 Guidelines do recommend a maximum temperature increase of 15° for a bundle of cables operating at full PoE or PoE+ power. To address this concern with 28 awg cords, bundle sizes should be limited if cords are expecting to support POE. Contact Legrand® for more information.



CAT 6 U/UTP (RDC)

STANDARD COPPER CABLING SYSTEM WITH REDUCED DIAMETER PATCH CORDS

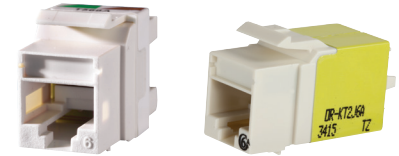
LEGRAND

TechChoice + KT2J CAT 6 U/UTP Modular Keystone Jacks

Description	Part Number
TechChoice CAT 6, Keystone Jack T568A/B, individual pack	OR-KS6A*
TechChoice CAT 6, Keystone Jack T568A/B, 25 pack	OR-KS6*
KT2J CAT 6 Keystone Jack T568A/B individual pack	OR-KT2J6*

*Standard color is Fog White. Choose from additional colors below by adding suffix designation.

-00 -36 -42 -43 -44 -45 -78 -88 -99



OR-KS6A

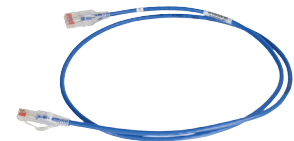
OR-KT2J6A

Legrand CAT 6 U/UTP reduced diameter Cords (RDC) CAT 6U/UTP Patch Cords

Description	Part Number
Patch Cord 4-Pair RDC CAT 6 U/UTP, single pack	R- RDC6xx-yy

xx = Length: (03), (05), (09), (10), (15), (20) or (25) feet.
yy = Patch Cord Color: choose from the colors below.

06 09



OR-RDC603-06

TechChoice CAT 6 U/UTP Patch Cords

Description	Part Number
Patch Cord 4-Pair TechChoice CAT 6 U/UTP, individual pack	OR-SPCA6xx-yy
Patch Cord 4-Pair TechChoice CAT 6 U/UTP, 10 pack	OR-SPC6xx-yy

xx = Length: (03), (05), (09), (10), (15), (20) or (25) feet.
yy = Patch Cord Color: choose from the colors below.

00 02 04 05 06 08 09



OR-SPCA605-05

TechChoice CAT6 U/UTP and Unloaded Keystone Jack Patch Panels

Description	24-Port	48-Port
Flat Panel CAT 6 U/UTP	OR-SP6U24	OR-SP6U48
Angled Panel CAT 6 U/UTP	OR-SPA6U24	OR-SPA6U48
Flush Load Flat Panel Kit Unloaded for Keystone Jacks	OR-SPKFU24	OR-SPKFU48
Flush Load Angled Panel Kit Unloaded for Keystone Jacks	OR-SPAKFU24	OR-SPAKFU48
Flat Panel Kit Unloaded for Keystone Series Jacks	OR-SPKSU24	OR-SPKSU48
Angled Panel Kit Unloaded for Keystone Series Jacks	OR-SPAKSU24	OR-SPAKSU48



SP6U24



SPKSU48

SUPERIOR ESSEX

CAT 6 U/UTP Cable*

Listing	Part No.	Nom. Diameter in (mm)	Approx. Weight lbs/kft (kg/km)	Package
CMR	77-246-xA	0.22 (5.5)	24 (36)	1,000' BrakeBox®
CMR	77-272-xA	0.22 (5.5)	24 (36)	1,000' Plywood reel
CMR	77-240-xA	0.22 (5.5)	24 (36)	1,000' POP™ box
CMP	77-246-xB	0.22 (5.5)	25 (37)	1,000' BrakeBox
CMP	77-272-xB	0.22 (5.5)	25 (37)	1,000' Plywood reel
CMP	77-240-xB	0.22 (5.5)	25 (37)	1,000' POP box

x = Jacket Color: choose from the colors below.

2 3 4 5 6 7 9 D E

* Superior Essex copper cables provide EPDs, HPDs and Multi-Attribute Labels.

