



CAT 6+ U/UTP

PREMIUM COPPER CABLING SYSTEM

About nCompass

nCompass is an innovative product offering of structured cabling solutions created by Legrand and Superior Essex. nCompass provides you with support, reliability, flexibility, and efficient solutions that meet or exceed industry standards and are backed by Limited Lifetime Warranty.

Demonstrating a commitment to sustainability, nCompass Systems offer the first and only Environmental Product Declarations and Health Product Declarations for a structured cabling solution.



This nCompass™ copper solution combines Superior Essex DataGain® CAT 6+ U/UTP cabling and Clarity® 6 connectivity by Legrand®, offering premium channel performance that exceeds the ANSI/TIA-568-C.2 standard. With 6 dB margin in ACR and PSACR, this system is designed for changing technologies requiring a network that will grow with future demands.

System Benefits

- 6 dB crosstalk margin above ANSI/TIA-568-C.2 requirements
- CableID® allows cable run to be identified easily on both ends
- ColorTip™ allows for cables to be easily identified
- Clarity 6 connectivity is center tuned to allow the shortest possible channel configurations
- Clarity 6 patch cords are 100% factory tested for performance
- Backed by a Limited Lifetime Warranty

Channel Margin Guarantees

| Parameter | Margin vs. TIA-568-C.2 |
|----------------|------------------------|
| Insertion Loss | 5% |
| NEXT | 6 dB |
| PSNEXT | 6 dB |
| Return Loss | 3 dB |
| ACRF | 8 dB |
| PSACRF | 9 dB |
| ACR | 8 dB |
| PSACR | 9 dB |

NOTE: Margins supported over standard compliant channels from 7 to 100 meters



CAT 6+ U/UTP

PREMIUM COPPER CABLING SYSTEM

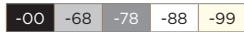
LEGRAND

| Clarity® CAT 6 U/UTP Modular Jacks for Workstation | |
|--|-------------|
| Description | Part Number |
| TracJack® Clarity 6, 180° Exit T568A/B - Fog White | OR-TJ600* |
| Series II, 1-Port Clarity 6, T568A/B, 180° - Fog White | OR-S21600** |
| Series II, 2-Port Clarity 6, T568A/B, 180° - Fog White | OR-S22600** |
| Clarity CAT 6 High Density Jack, T568A/B - Fog White | OR-HDJ6*** |

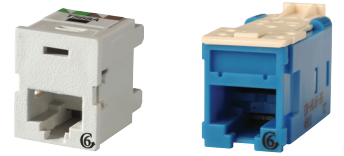
*Standard color is Fog White. Choose from additional colors below by adding suffix designation.



**Standard color is Fog White. Choose from additional colors below by adding suffix designation.



***Standard color is Fog White. Choose from additional colors below by adding suffix designation.



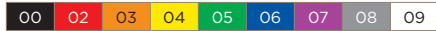
OR-TJ600-99

OR-HDJ6-36

Clarity CAT 6 U/UTP Patch Cords and Cable Assemblies

| Description | Part Number |
|------------------------------|-------------|
| Clarity 6 Modular Patch Cord | OR-MC6xx-yy |

xx = Length: (03), (05), (07), (09), (15), (20) or (25) feet.
yy = Patch Cord Color: choose from the colors below.



OR-MC607-06

Clarity CAT 6 U/UTP Patch Panels and Jacks

| Description | 24-Port | 48-Port |
|---|-------------|-------------|
| Angled Panel Clarity 6 | OR-PHA66U24 | OR-PHA66U48 |
| Flat Panel Clarity 6 | OR-PHD66U24 | OR-PHD66U48 |
| Flat PJ Jack Panel Unloaded | OR-PHDPJU24 | OR-PHDPJU48 |
| Panel Jack CAT 6 U/UTP T568A/B | OR-PJ6** | - |
| Flat HDJ Panel Unloaded | OR-PHDHJU24 | OR-PHDHJU48 |
| Angled HDJ Panel Unloaded | OR-PHAHJU24 | OR-PHAHJU48 |
| High Density Jack Clarity 6 U/UTP T568A/B | OR-HDJ6** | - |

*Standard color is Fog White. Choose from additional colors below by adding suffix designation.



**Standard color is Fog White. Choose from additional colors below by adding suffix designation.



OR-PHA66U24



OR-PHAHJU48

SUPERIOR ESSEX

DataGain® CAT 6+ U/UTP Cable*

| Listing | Part No. | Nom. Diameter in (mm) | Approx. Weight lbs/kft (kg/km) | Package |
|---------|-----------|-----------------------|--------------------------------|---------------------|
| CMR | 66-246-xA | 0.22 (5.5) | 24 (36) | 1,000' BrakeBox® |
| CMR | 66-272-xA | 0.22 (5.5) | 24 (36) | 1,000' Plywood reel |
| CMR | 66-240-xA | 0.22 (5.5) | 24 (36) | 1,000' POP™ box |
| CMP | 66-246-xB | 0.22 (5.5) | 26 (39) | 1,000' BrakeBox |
| CMP | 66-272-xB | 0.22 (5.5) | 26 (39) | 1,000' Plywood reel |
| CMP | 66-240-xB | 0.22 (5.5) | 26 (39) | 1,000' POP box |

x = Jacket Color: choose from the colors below.



* Superior Essex copper cables provide EPDs, HPDs and Multi-Attribute Labels.

