



CAT 6+ F/UTP

PREMIUM COPPER CABLING SYSTEM

About nCompass

nCompass is an innovative product offering of structured cabling solutions created by Legrand and Superior Essex. nCompass provides you with support, reliability, flexibility, and efficient solutions that meet or exceed industry standards and are backed by Limited Lifetime Warranty.

Demonstrating a commitment to sustainability, nCompass Systems offer the first and only Environmental Product Declarations and Health Product Declarations for a structured cabling solution.



This nCompass™ copper solution combines Superior Essex CAT 6+ F/UTP cabling and CAT 6 F/UTP connectivity by Legrand®, offering channel performance that exceeds the ANSI/TIA 568-C.2 standard. This shielded system offers a higher level of signal security required by government, gaming, healthcare and other environments that are concerned with data protection. This system also has an overall shield core that provides protection against EMI/RFI.

System Benefits

- Guaranteed performance to 500 MHz; assures ample headroom for future needs
- CableID® allows cable run to be identified easily on both ends
- ColorTip™ allows for cables to be easily identified
- Backed by a Limited Lifetime Warranty

Channel Margin Guarantees	
Parameter	Margin vs. TIA-568-C.2
Insertion Loss	0 %
NEXT	2 dB
PSNEXT	3 dB
Return Loss	0 dB
ACRF	3 dB
PSACRF	4 dB
ACR	3 dB
PSACR	4 dB

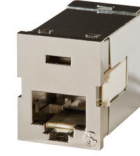
NOTE: Margins supported over standard compliant channels from 7 to 100 meters

CAT 6+ F/UTP

PREMIUM COPPER CABLING SYSTEM

LEGRAND

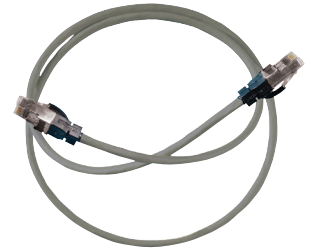
CAT 6 F/UTP Modular Jack	
Description	Part Number
TracJack® Cat6 Shielded 110 T568A/B	OR-TJS600



OR-TJS600

CAT 6 F/UTP Patch Cords and Cable Assemblies	
Description	Part Number
Clarity 6 Shielded Modular Patch Cord	OR-MCS6xx-yy

xx = Length: (03), (05), (07), (09), (15), (20) or (25) feet.
 yy = Patch Cord Color: choose from the colors below.



OR-MCS605-08

CAT 6+ F/UTP Patch Panels		
Description	24-Port	48-Port
Shielded Panel Unloaded for PJ Jack	OR-PHDPJSE24	-
Panel Jack CAT 6A Shielded T568A/B	OR-PJS6A	-
Shielded CAT 6A Panel With Toolless 6A Jacks (TKS6A)	OR-PHDTKS6A24	-
Shielded Unloaded Panel for TKS Jacks	PHDTKSU24	PHDTKSU48
Shielded CAT 6A Toolless Jack	OR-TKS6A	-

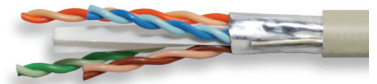


OR-PHDPJSE24

SUPERIOR ESSEX

CAT 6+ F/UTP (ScTP) Cable*				
Listing	Part Number	Nom. Diameter in (mm)	Approx. Weight lbs/kft (kg/km)	Package
CMR	6T-272-xA	0.29 (7.3)	40 (59)	1,000' Plywood Reel
CMP	6T-272-xB	0.30 (7.7)	46 (69)	1,000' Plywood Reel

x = Jacket Color: choose from the colors below.



* Superior Essex copper cables provide EPDs, HPDs and Multi-Attribute Labels.